

2023 Leisure User Guide

Please see over for more information about the Waterway.

Dead Slow Minimum Wake

These areas are designated for navigational safety and importance for wildlife. Bays, creeks and tributaries provide vital feeding and breeding areas. At low water most of these areas may dry out or become very shallow revealing submerged natural features. The restriction on speed and wake reduces disturbance and helps protect wildlife from swamping or being panicked by fast moving vessels, and the environment from damaging effects of wake and vessel contacts. Operating at slow speed in these areas also reduces the possibility of serious injury or damage and also helps to reduce conflicts between users and ensures safe navigation for all.

Jet Ski/PWC

Jet-skiing is an increasingly popular activity, and the Milford Haven Waterway is an excellent place to enjoy them in a relatively safety environment, however while they are welcome anywhere on the waterway, they must be ridden with due care for other waterway users and in compliance with Harbour bye-laws and zoning. Check our website for more information to assist you to enjoy your pastime. https://www.mhpa.co.uk/jet-skis/

Water-skiing Areas

In the interest of safety, vessel owners should be mindful of their wake in these areas and transit with caution.

Renewable Test Bed Sites

Sensitive Habitat Zone - Voluntary No Anchoring

National Park

Hotel or Public House

Castle

Launch Site

Yacht Club

Public Pontoon (Seasonal)

Fuel

Moorings Private Note: Annual Standing Notice to Mariners No.10. Water-skiing, Aquaplaning or similar activities not permitted among moorings.

Privately owned/operated Pontoon (Seasonal)

Dead Slow Minimum Wake Marker Buoys

Moorings (Commercial)

Day Visitor Moorings

These moorings are for the use of vessels up to a max length of 40ft and max weight of 10 tonnes during daylight only. The skipper must ensure sufficient depth of water and swinging area is available for the vessel to be secured. Full conditions of use can be found at www.mhpa.co.uk/marine-leisure-services/

Day & Night Visitor Moorings

These moorings are to be used the same as Day Visitor Moorings with the addition of over night stays permitted. Please visit https://www.daleseagrass.org/ to pay for your mooring.

Defibrillator (accessible from water)

Defibrillators can be found at:

- Hazelbeach: public toilet wall at the top of the pontoon
- Burton: public toilet wall in the car park
- Neyland Marina: top of the gangway entrance
- Milford Marina: Pier Head and Cleddau House
- Dale: the boathouse
- Lawrenny: in Lawrenny Arms
- Black Tar: top of slipway
- Sandy Haven: alongside slipway

All Pilot Vessels and the Water Ranger RHIB carry defibrillators (contact details overleaf).

Leading Lights in the Haven

Haven Approach:

West Blockhouse (WBH)

Watwick Beacon (WB) 022(T)

West Channel:

Great Castle Head (GCH)

Little Castle Head (LCH) 040(T)

Main Channel:

Popton and Bullwell beacons (PP) (BW) in line 095(T) 094(T)

Milford Shelf:

Beacons above Newton Noyes (NN) 080(T) 087(T)



Stay safe when using the Waterway.

The RYA SafeTrx app monitors your boat journeys and can alert emergency contacts should you fail to arrive on time.

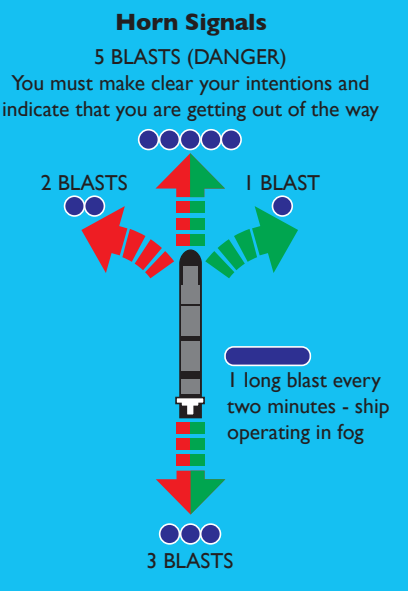
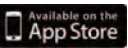
It is an app for both Android and Apple iOS smartphones that allows you to track your journey on your phone. Visit: www.safetrx.rya.org.uk



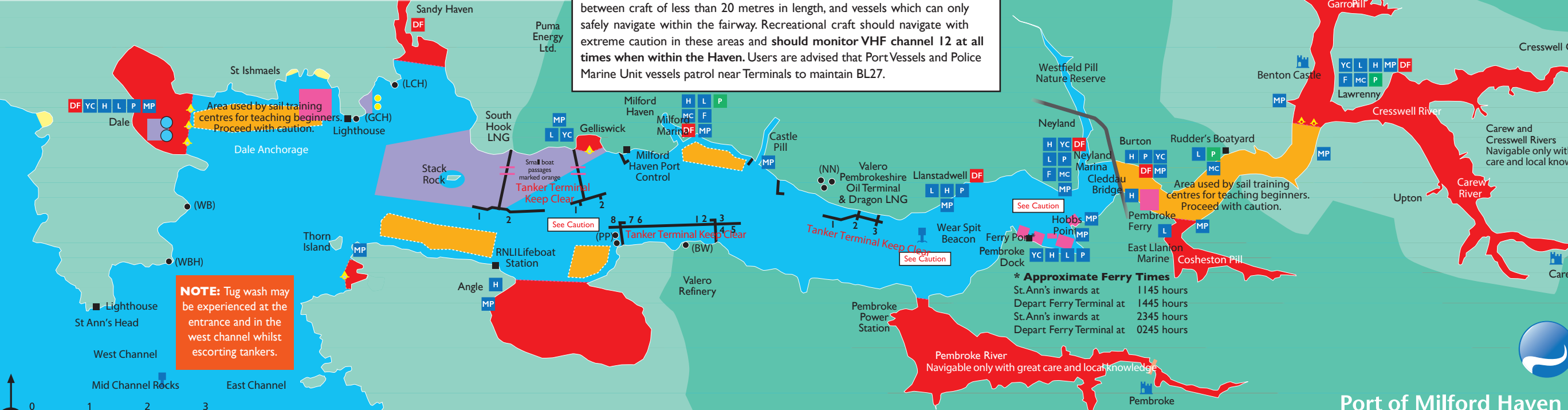
Please respect this environment:

take your litter home with you and follow the Pembrokeshire Marine Code. Together we'll protect the amazing plants and wildlife found

along the Waterway. To find out how you can protect marine wildlife go to www.pembrokeshiremarinecode.org.uk or download the Wales Coast Explorer App



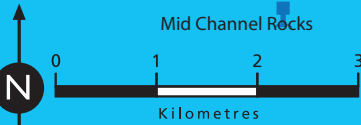
CAUTION: These areas have a high incidence of close quarters situations between craft of less than 20 metres in length, and vessels which can only safely navigate within the fairway. Recreational craft should navigate with extreme caution in these areas and should monitor VHF channel 12 at all times when within the Haven. Users are advised that Port Vessels and Police Marine Unit vessels patrol near Terminals to maintain BL27.



NOTE: Tug wash may be experienced at the entrance and in the west channel whilst escorting tankers.

*** Approximate Ferry Times**

St. Ann's inwards at	1145 hours
Depart Ferry Terminal at	1445 hours
St. Ann's inwards at	2345 hours
Depart Ferry Terminal at	0245 hours



List of Admiralty Charts 1478, 2878, 3273, 3274, 3275
Leisure Charts SC5620 folio | Imray Y26 and 2600 ATLAS refer







NOT TO BE USED FOR NAVIGATION

Port of Milford Haven

Pembroke Barrage
To request barrage opening, ring County Hall 01437 764551
Operating times 07:00-19:00 weekdays 09:00-12:00 Saturdays
Please request 72hrs in advance

www.mhpa.co.uk
PortofMilfordHaven
@mh_port

It is recommended that you:

- **Inform** Tell others where you are going and when you will be back.
- **Tides and Weather** Check the tides and forecast to ensure conditions are and will remain suitable for your vessel and activity.
- **SOS Device** Carry a marine VHF radio with Ch16 and capable of listening to Ch12 (harbour working channel) as well as any other means of calling for help.
- **Wear a Lifejacket** You never know when you might need it and it could just save your life.
- **Engine and Equipment checks** Ensure you have appropriate working equipment, fuel and spares aboard and that all moorings or anchors being used are capable of withstanding extreme weather conditions.
- **Training** Ensure your vessel is handled in a competent manner and avoid taking unnecessary risks.

RNLI safety information is available by visiting www.rnli.org.uk

Been involved in an incident on the Waterway?

Report to Milford Haven VTS on 01646 696136/7 or complete an incident report form, found on the Port's website: goo.gl/yqhVWwz



The Water Ranger

The Water Ranger patrols the Waterway in a grey RHIB with Patrol on the sides from St Ann's Head at the entrance to the Haven, upriver to Haverfordwest on the Western Cleddau, and Blackpool Mill on the Eastern Cleddau.The main aim of this service is to provide information, advice and assistance to all Waterway users, police the zoning system and enforce the appropriate Bye-laws.

If you wish to contact the Water Ranger please call 01646 696100.

Further information for recreation users can be found by visiting www.mhpa.co.uk/enjoy-the-waterway

Waterway patrol vessels

Port pilot vessels operate throughout the Waterway 24/7 and can be recognised by their green hulls and white superstructure. All patrol vessels keep radio watch on channel 12.

Sharing the Estuary Safely

You are sharing the Haven with wildlife, commercial activity and a whole range of other leisure activities.To promote the safety of navigation and reduce conflict between users, the Waterway is zoned for high speed activity.The zones also ensure that the sensitive areas of the Haven remain tranquil and can be used for quiet enjoyment.The Milford Haven Port Authority Bye-laws (see page 16) control navigation and should be followed at all times.



Conservation & Wildlife

The Haven is a special place, protected for its tranquil, scenic landscape and varied wildlife.The upper and lower reaches form part of the Pembrokeshire Coast National Park because of their unspoilt character. For more information on exploring the National Park visit: www.pembrokeshirecoast.org.uk

In spring and summer the peaceful bays and rivers form breeding grounds for many birds, whilst in winter up to 25,000 birds such as shelduck, teal, widgeon, curlew and redshank come here to feed. Many parts of the foreshore are Sites of Special Scientific Interest and the whole Haven forms part of the Pembrokeshire Marine Special Area of Conservation because of its international importance for marine wildlife above and below the water. For more information visit www.pembrokeshiremarinesac.org.uk

Human activities in the Haven can damage and disturb wildlife and its habitats. Please think and act in an environmentally friendly way by following the zoning, Bye-laws and Pembrokeshire Marine Code. Following the Marine Code will help you to enjoy the best of the coast without disturbing sensitive wildlife. www.pembrokeshiremarinecode.org.uk



Recreation Activities

A whole range of water-based activities take place on the Waterway, including sailing, power boating, water-skiing, personal watercraft use (jet-skiing), windsurfing, canoeing, paddleboarding, fishing, diving and bathing. Activities take place on both on an informal basis and through organised events.



Navigation Notes

Commercial Vessel Speed

Large commercial vessels may, at times, make passage at higher speeds than expected to maintain proper control and steerage. Users should monitor the approach of vessels and remain clear when required.

Approach for Milford Docks

Leading lights 348° fixed blue in line with fixed blue on white background attached to wall below the Lord Nelson Hotel.

Cleddau Bridge

There may be confused water by bridge piers approximately 1 hour before and after High Water springs.



Lifeboats

A Tamar class lifeboat is based at Angle. **People in danger and needing rescue services should contact Milford Coastguard - 999** - ask for Coastguard, or call on VHF channel 16 using accepted emergency procedures.



Public Pontoons (Mar-Oct)

A maximum stay of 12hrs is permitted with no return within 24hrs.The 'T-Head' must remain clear at all times for embarking /disembarking.



Fishing Restrictions

Welsh Government legislation and the Bass Order 1990 restrict fishing between 1st March and 30th November in areas of the Waterway.Fishing methods, minimum sizes and catch quantities are also controlled throughout. For information call 0300 025 3500. Fishing for salmon, trout, freshwater species and eels within the Waterway requires a valid UK rod licence.



Local Weather Information

Weather forecasts are broadcast by **Milford Haven Coastguard on channels 16 and 84**. Times: Inshore weather 0750, repeated three hourly, and 1950, repeated three hourly. Strong wind and gale warnings are broadcast as soon as they have been received and on subsequent three hour forecasts.



Tidal Information

Differences at High Water

Approximate times to be applied to Milford Haven

High Water predictions

Dover	+5 hrs	Tenby	-14 mins
Fishguard	+1 hr 3 mins	Swansea	+5 mins
Neyland	+2 mins	Ilfracombe	-30 mins
Haverfordwest	+10 mins	Padstow	-50 mins

Tidal Streams

Across the entrance to Milford Haven the streams run approximately at right angles to the line of approach; while within the entrance they run nearly parallel to the channel.

The tidal streams run approximately as follows:

Position	Interval from High Water Milford Haven	Direction
1 mile outside entrance	+0455 -0125 <i>Maximum spring rate in each direction is 2.25 knots</i>	East West
Inside the entrance	-0555 +0030 <i>Maximum spring ingoing rate is 1.5 knots and outgoing rate is 1.75 knots</i>	Ingoing Outgoing

It should be noted that heavy swell may be experienced until inside StAnn's Head and in adverse conditions as far as Angle Light-buoy.

Tidal streams within the Haven run in the direction of the deepwater channel as far as Wear Point (51°42'N, 04°59'W). In the reach above the Wear Point the ingoing stream is deflected to the north side of the channel by Carr Spit (51°42'N, 04°57'.8W).

In Pembroke Reach the ingoing stream runs principally in the channel north of Dockyard Bank, attaining a spring rate of 2.0 knots; it is weak and irregular in the channel south of this bank, in which it attains a spring rate of 0.5 knot.The outgoing stream runs strongly in the channel south of the Dockyard Bank, attaining a spring rate of 2 knots. It is weak on the south side of the channel, north of the bank; in the north part of the latter channel an eddy runs strongly during the outgoing stream.



Safety

FOG - recommended procedure for small craft in visibility of 0.5 mile or less

- 1.All craft with VHF radio maintain a listening watch on channel 12
2. Provided you are aware of your position and you intend staying out of the fairway, monitor the commercial activity reported on channel 12
3. If you are uncertain of your position, it may be prudent to anchor clear of the shipping channel until visibility improves

Sound signals used by vessels in the area (Bye-laws No 9)

Signal	Meaning
Four short blasts in rapid succession	A power-driven vessel underway is about to turn around (a) altering course more than 135°
<i>Followed after a short interval by</i>	
One short blast	Vessel turning with head to starboard or
Two short blasts	Vessel turning with head to port
Three short blasts	Vessel operating to stern
One long blast, two short blasts	Power-driven vessel or vessel not under command unable to give way to a sailing vessel
Five short blasts	A vessel is doubtful if you are taking sufficient avoiding action

Crime Stoppers	0800 555111
Pembrokeshire County Council Beaches Dept.	01646 602105
Pembrokeshire Coast National Park	01646 624800
Tourist Information Centre, Haverfordwest	01437 775244
Other	
Pembroke Haven	01646 684403
Pembrokeshire	01646 692799
Neyland	01646 600267
Dale	01646 636362
Yacht Clubs	
Windjammer Marine	01646 699070
Rudders Boatyard	01646 600288
Quadra Marine	01646 278270
Neyland Marina	01646 601601
Milford Marina and Boatyard	01646 696312/3
Lawrenny Quay	01646 651212
East Llanion Marine	01646 686866
Dale Sailing	01646 603110
Berths/Boatyards/Chandlery	
Natural Resources Wales (Incident Hotline)	0300 065 3000
Withybush Hospital, Haverfordwest	01437 764545
Customs	0800 595000
Police (Inc. Marine Unit)	999 or 0845 330 2000
HM Coastguard	999 or 01646 690909
Emergency Numbers	
Castlemartin Firing Range	16 01646 662367
Milford Pierhead	14 01646 696310
Water Ranger	12 & 16 01646 696100
Milford Haven VTS	12 01646 696137
Key Contacts	
VHF Channel Telephone	