

APPENDIX 4.4 - CUMULATIVE DEVELOPMENTS INFORMATION

Introduction

- 1.1 An Environmental Impact Assessment (EIA) Scoping Opinion to inform the Environmental Statement (ES) for the Pembroke Dock Infrastructure (PDI) project under Regulation 14 of The Town and Country Planning (Environmental Impact Assessment) (Wales) Regulations 2017 and Regulation 13 of The Marine Works (Environmental Impact Assessment) Regulations 2007 (as amended) was provided by Pembrokeshire County Council on 16 August 2018 (reference: 18/332/SO) and Natural Resources Wales on 4 October 2018.
- 1.2 Scoping Opinion reference: 18/332/SO paragraph 11 confirmed that the projects within Table 4.4.1 below should be considered cumulatively with the proposed development in so much as current available information will allow.
- 1.3 A plan (drawing ref: JPW1115-006) is provided at Figure 4.4.1 illustrating the location of the cumulative developments considered within the cumulative effects assessment within this EIA.

Table 4.4.1 – Cumulative Developments Information

Project	Reference	Status	Description
Martello Quay Marina at Pembroke Dock	MAR/096/LDP/0 and 07/0020/CA	Development Plan allocation and lapsed planning permission	Development Plan allocation (Policy GN.21). Obtained planning permission in February 2008 but has since lapsed. The project includes up to 260 marina berths and associated car parking; marine workshops and a chandlery; 450 houses and apartments; a new public promenade; shops; a pub and restaurant; a hotel; and a five-screen multiplex cinema (http://www.martelloquays.co.uk/default.aspx).
Marine Energy Test Area 1 (META 1)	18/1231/PA and DEML1875	Planning permission and marine licence	A marine licence was granted 10 June 2019 and planning permission granted 14 June 2019 for five testing sites located near Pembroke Port to support testing and monitoring of marine energy components and subassemblies. Testing activities includes mobilisation and demobilisation of vessels, deployment and monitoring of components / subassemblies. Components and sub-assemblies will be deployed to the seabed, on the surface or within water column.
Marine Energy Test Area 2 (META 2)		EIA Scoping	The project will provide three testing sites located within MHW to support testing and monitoring of marine energy devices. Testing activities includes mobilisation and demobilisation of vessels, deployment wave and tidal energy devices. Devices will be deployed to the seabed, on the surface or within water column.
Pembrokeshire Wave Energy Demonstration Zone (PDZ)		EIA Scoping	Subject to EIA Scoping (https://www.wavehub.co.uk/pembrokeshire-wave-zone). The project entails the development of 90 km ² of seabed with water depths of approximately 50 metres and a wave resource of approximately 19 kW/m; to support the demonstration of wave arrays with a generating capacity of up to 30MW for each project. Consent for this project could be achieved in 2022, infrastructure could be built by 2024 and the first technology could be installed in 2025.

Combined heat and power (CHP) at Southhook	E010054	Development consent order	<p>The DCO came into force on 23 October 2014 for a combined heat and power station with capacity of up to 500 MW.</p> <p>https://infrastructure.planninginspectorate.gov.uk/projects/wales/south-hook-combined-heat-power-station/). The project has not been progressed and the DCO expires on 22 October 2019. While this project was included in the Scoping Opinion it has not progressed and the DCO will expire prior to the planning application being submitted and is therefore does feature within this EIA.</p>
Mixed-use development at Milford Docks	14/0158/PA	Undetermined planning application	<p>Demolition of several existing buildings and the mixed-use redevelopment of Milford Waterfront comprising up to 26,266 m² of commercial, hotel, leisure, retail and fishery related floorspace. Up to 190 residential properties, up to 70 additional marina berths, replacement boat yards, landscaping, public realm enhancements, access and ancillary works. A decision on this application is yet to be made by the local planning authority.</p> <p>http://planning.pembrokeshire.gov.uk/swiftlg/apas/run/WPHAPPDETAIL.DisplayUri?theApnID=14/0158/PA&backURL=%3Ca%20href=wphappcriteria.display?paSearchKey=995402%3ESearch%20Criteria%3C/a%3E%20%3E%20%3Ca%20href=%27wphappsearchres.displayResultsURL?ResultID=2871763%26StartIndex=1%26SortOrder=APNID%26DispResultsAs=WPHAPPS EARCHRES%26BackURL=%3Ca%20href=wphappcriteria.display?paSearchKey=995402%3E Search%20Criteria%3C/a%3E%27%3ESearch%20Results%3C/a%3E</p>
Greenlink underground cabling and converter station at Pembroke Power Station	qA1296053	Undetermined marine licence	<p>A marine licence application was submitted in 2018, pending decision, for marine Ground Investigations and for the Interconnector. The Project is a 500MW subsea electricity interconnector linking the power markets in Ireland and Great Britain and is planned for commissioning in 2023. As an EU Project of Common Interest, it is one of Europe's most important energy infrastructure projects. The interconnector is planned to make Landfall at Freshwater West beach to the south of the mouth of the MHW.</p>

Cogeneration Unit at Valero Refinery	qA1312073 or DNS/3214300	Development of National Significance planning permission	Planning permission was granted on 7 December 2017 for development of a cogeneration facility to provide the electrical power and support the steam demands of the refinery. Valero has configured the project to efficiently generate electricity whilst using the waste heat arising from this combustion process to produce super-heated steam for use within the refinery. The use of waste heat and the production of steam usefully increases the overall efficiency of the electrical generation plant (https://dns.planninginspectorate.gov.uk/projects/wales/valero-cogeneration-facility/).
--------------------------------------	--------------------------	--	--

1.4 In addition to the above, which have been considered within all chapters of the EIA, there are also smaller scale developments as set out in Table 4.2.2 below that are not of sufficient scale to be considered as cumulative developments in EIA terms but are nevertheless relevant to the consideration of the heritage effects of the PDI project. Consequently, these have been considered within Chapter 10 – Historic Environment.

Table 4.4.2 – Other Relevant Developments Information

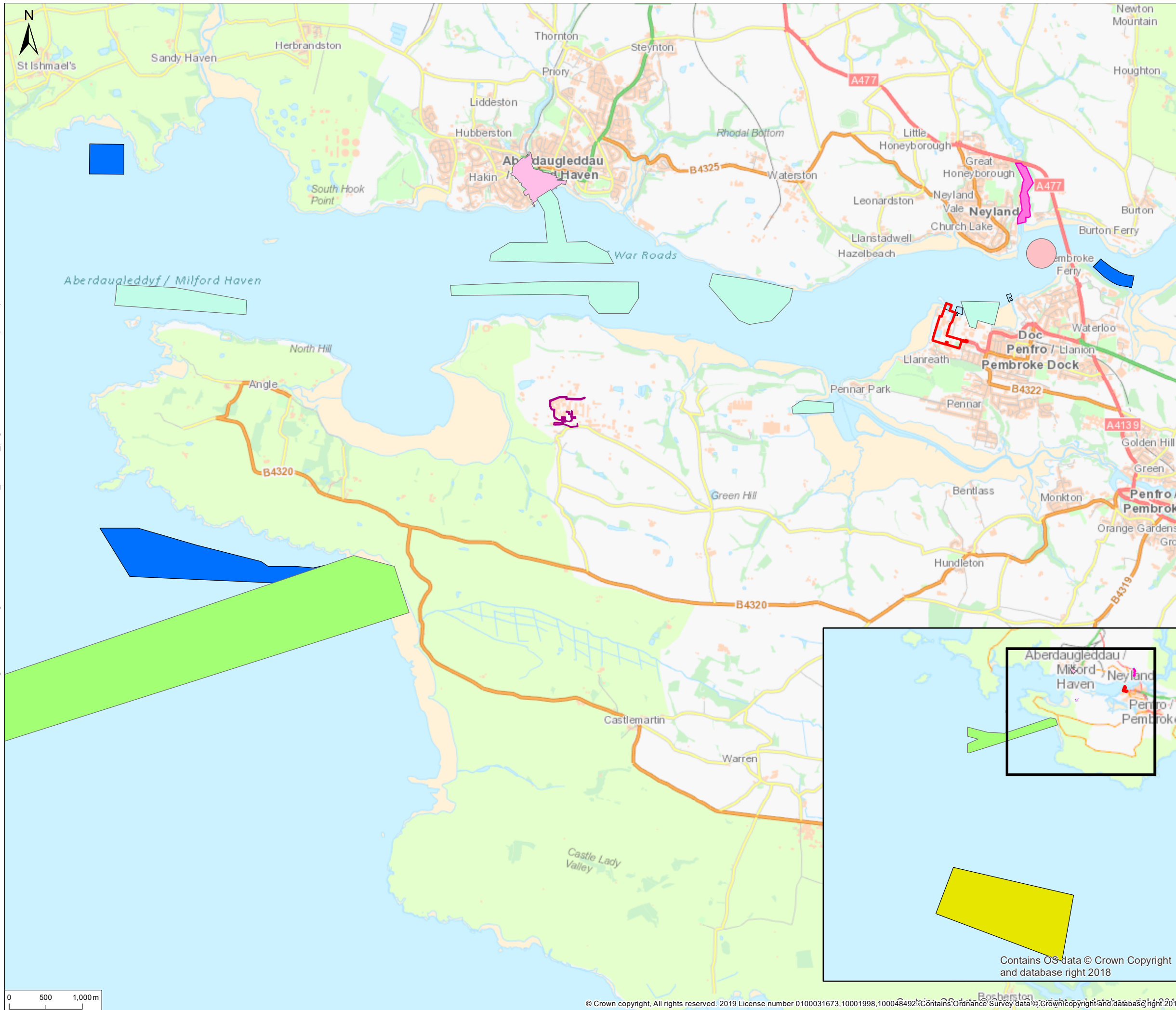
Project	Reference	Status	Description
Western Hangar, Pembroke Port	18/0660/PA	Planning permission	Obtained planning permission in December 2018. Project includes demolition and rebuild of Grade II listed Western Hangar South Annex for use as offices and workshops (B1 Business Use) and formalisation of associated parking area http://planning.pembrokeshire.gov.uk/swiftlg/apas/run/WPHAPPDETAIL.DisplayUrl?theApnID=18/0660/PA&backURL=%3Ca%20href=wphappcriteria.display?paSearchKey=1114719%3Esearch%20Criteria%3C/a%3E%20%3E%20%3Ca%20href=%27wphappsearchres.displayResultsURL?ResultID=3129106%26StartIndex=31%26SortOrder=APNID%26DispResultsAs=WPHAPPSEARCHRES%26BackURL=%3Ca%20href=wphappcriteria.display?paSearchKey=1114719%3Esearch%20Criteria%3C/a%3E%27%3Esearch%20Results%3C/a%3E .
Eastern and Western Hangars, Pembroke Port	18/0661/PA	Planning permission	Obtained planning permission in December 2018. Project includes alterations, extension and renovation of Grade II listed Eastern Hangar North Annexes to provide workshop and office accommodation (B1 Business Use Class) and formalisation of parking area. Alterations and renovation of Grade II listed Western Hangar North and West Annexes to provide office

accommodation (B1 Business Use Class) and formalisation of parking area

<http://planning.pembrokeshire.gov.uk/swiftlg/apas/run/WPHAPPDETAIL.DisplayUri?theApnID=18/0661/PA&backURL=%3Ca%20href=wphappcriteria.display?paSearchKey=1114719%3ESearch%20Criteria%3C/a%3E%20%3E%20%3Ca%20href=%27wphappsearchres.displayResultsURL?ResultID=3129106%26StartIndex=31%26SortOrder=APNID%26DispResultsAs=WPHAPPSEARCHRES%26BackURL=%3Ca%20href=wphappcriteria.display?paSearchKey=1114719%3ESearch%20Criteria%3C/a%3E%27%3ESearch%20Results%3C/a%3E>

Eastern and Western Hangars, Pembroke Port	18/0658/LB	Listed building consent	<p>Obtained listed building consent in January 2019 for demolition, renovations and extensions of Grade II listed Eastern and Western Hangars</p> <p>http://planning.pembrokeshire.gov.uk/swiftlg/apas/run/WPHAPPDETAIL.DisplayUri?theApnID=18/0658/LB&backURL=%3Ca%20href=wphappcriteria.display?paSearchKey=1114728%3ESearch%20Criteria%3C/a%3E%20%3E%20%3Ca%20href=%27wphappsearchres.displayResultsURL?ResultID=3129120%26StartIndex=1%26SortOrder=APNID%26DispResultsAs=WPHAPPS EARCHRES%26BackURL=%3Ca%20href=wphappcriteria.display?paSearchKey=1114728%3ESearch%20Criteria%3C/a%3E%27%3ESearch%20Results%3C/a%3E</p>
--	------------	-------------------------	--

O:\04 JOBS\01 OPEN JOBS\JPW1115 - PEMBROKE DOCK MARINE\4. Drawings\1. RPS Drawings\MXD\JPW1115-EIA-003RevA_D190620_(Figure 7-1 Cumulative Developments).mxd



© 2019 RPS Group
 Notes
 1. This drawing has been prepared in accordance with the scope of RPS's appointment with its client and is subject to the terms and conditions of that appointment. RPS accepts no liability for any use of this document other than by its client and only for the purposes for which it was prepared and provided.
 2. If received electronically it is the recipient's responsibility to print to correct scale. Only written dimensions should be used.

Legend

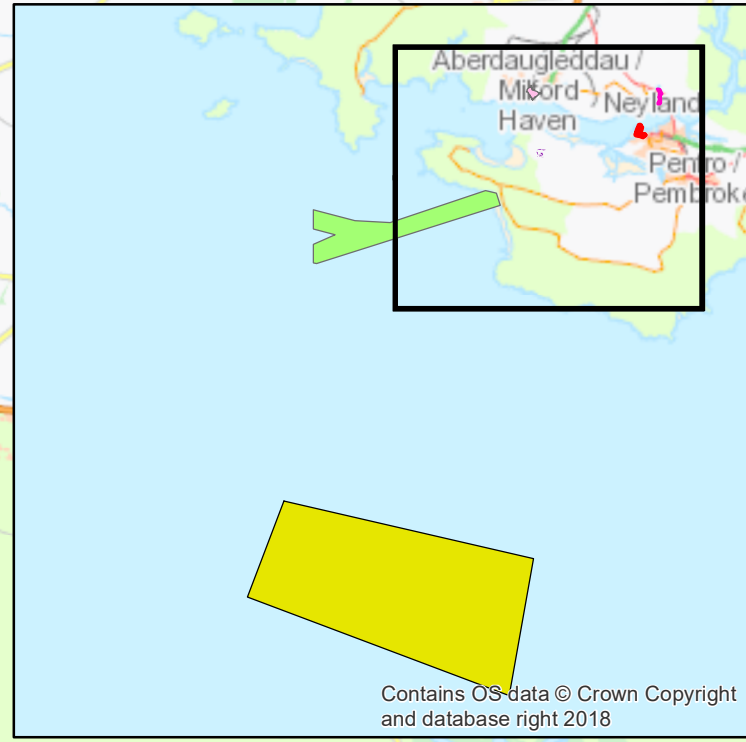
- Pembroke Dock Marine Development
- Dredge Disposal Site
- Milford Haven Port Authority Maintenance Dredging
- Neyland Marine Dredging
- Pembrokeshire Wave Demonstration Zone
- Mixed Development, Milford Waterfront
- Greenlink Interconnector
- Cogeneration Unit Valero
- META Phase 1
- META Phase 2

Rev	Description	By	CB	Date
A	Project name change	GG	DC	20/06/19

rps MAKING COMPLEX EASY
 Park House, Greyfriars Road, Cardiff, CF10 3AF
 T: +44(0)2920 668 662 E: rpsca@rpsgroup.com

Client **PEMBROKE DOCK MARINE**
 Project **PEMBROKE PORT INFRASTRUCTURE PROJECT**
 Title **PROJECTS IDENTIFIED FOR CUMULATIVE ASSESSMENT**

Status **DRAFT** Drawn By **GG** PM/Checked By **DC**
 Project Number **JPW1115** Scale @ A3 **1:50,000** Date Created **JUN 2019**
 Drawing Number _____ Rev _____
FIGURE 4.4.1 **B**



Contains OS data © Crown Copyright and database right 2018

