

Further Information

Key Contacts

	VHF Channel	STD number
Milford Haven Port Control	12	01646 696137
Water Ranger		01646 696100
Milford Pierhead	14	01646 696310
Milford Marina	37	01646 696312
Milford Coastguard	16, 84	01646 690909
Neyland Marina	37, 80	01646 601601
Lawrenny Yacht Station	None	01646 651212
Castlemartin Firing Range	14	01646 662367

Emergency Numbers

Police	999 or 0845 330 2000
Police Boat Section	0845 330 2000
Customs	01646 632023
Withybush Hospital, Haverfordwest	01437 764545
HM Coastguard	999 or 01646 690909

Yacht Clubs

Dale	01646 636362
Lawrenny	01646 651212
Neyland	01646 600267
Pembrokeshire	01646 692799
Pembroke Haven	01646 684403

Boatyards

Milford Marina Boatyard	01646 696312/3
Rudder's Boatyard	01646 600288
East Llanion Marine	01646 686866
Dale Sailing	01646 601636
Lawrenny Yacht Station	01646 651212
Windjammer Marine	01646 699070

Accommodation

Tourist Information Centre, Haverfordwest	01437 763110
---	--------------

design: rockpooldesign.co.uk cover image: Adrian Owens



Parc Cenedlaethol
Arfordir Penfro
Pembrokeshire Coast
National Park

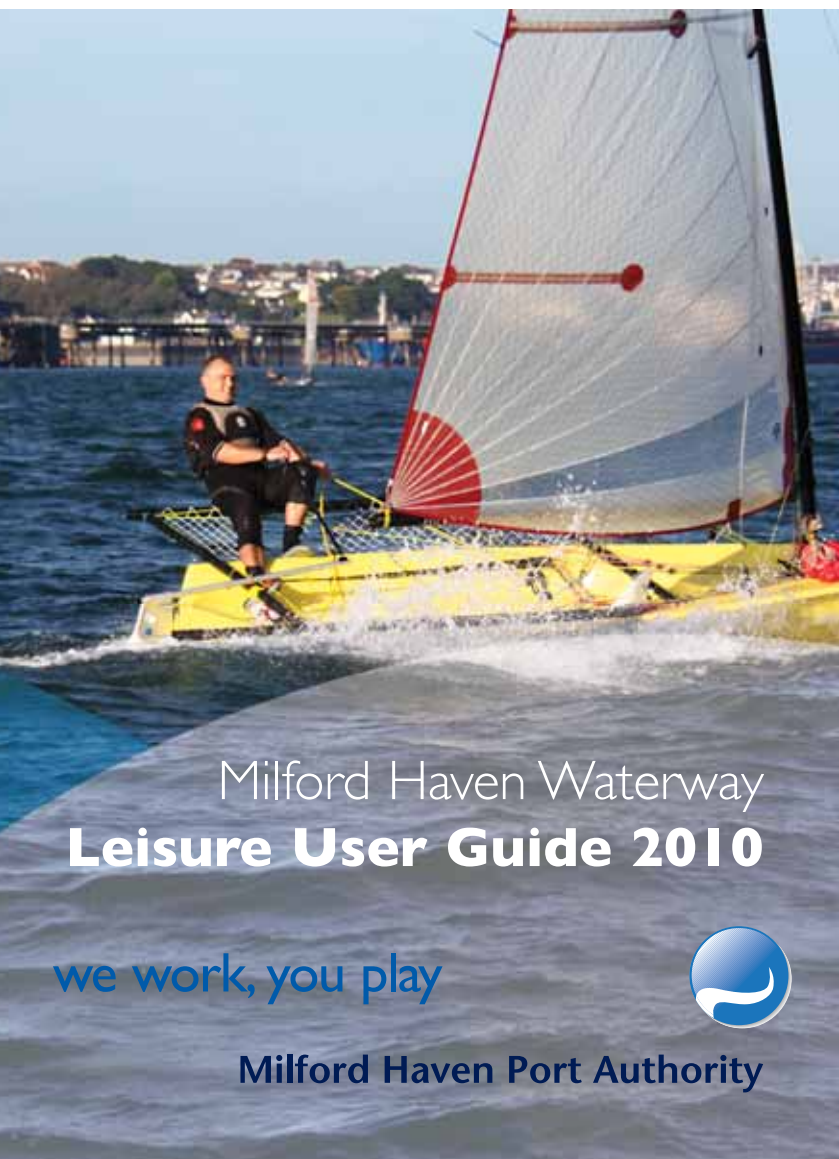


Maritime
Volunteer Service

Published by



Milford Haven Port Authority



Milford Haven Waterway Leisure User Guide 2010

we work, you play



Milford Haven Port Authority

As we welcome the arrival of LNG into the Port, particular attention is drawn to the Notice to Mariners 118 of 2008 - extracts of which are reproduced below:

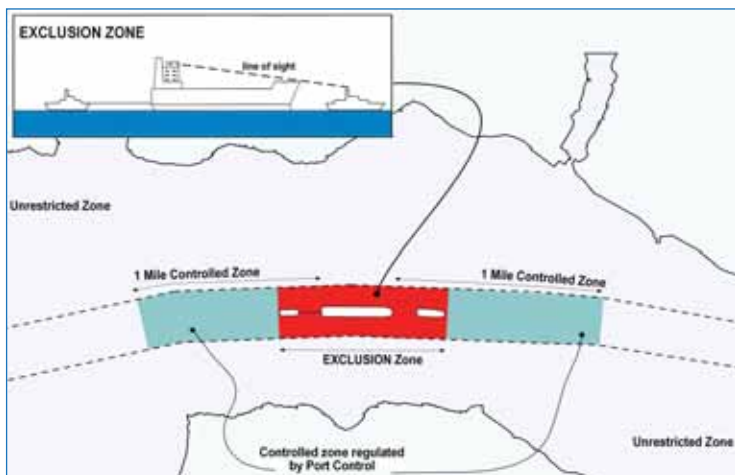
Controlled and Exclusion Zones

1. MARINERS ARE HEREBY ADVISED that, for enhancement of safety, certain specified vessels whilst navigating within the jurisdiction of the port may be allocated zones as follows:

2. **Controlled Zones** Extending 1 mile ahead and astern of the specified vessel and within the main channel. No commercial vessel of 20 metres or more may navigate within the controlled zone except astern of the specified vessel where such navigation is away from it and provided that prior permission has been sought from and granted by Port Control.

3. **Exclusion Zones** Extending ahead to the limit of the line of sight from the bridge of the specified vessel within the confines of the channel, no vessel is permitted to navigate within this zone at any time. Such limit will be determined by a patrol vessel stationed ahead. The zone astern will extend to the stern of an escort tug, where provided, or 100 metres where it is not.

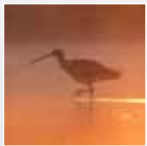
4. A not to scale diagram of the zones is below.





Conservation & Wildlife

- The unspoilt scenic qualities of the upper and lower reaches led, in 1952, to designation of the Pembrokeshire National Park.
- Many foreshore sites are designated as Sites of Special Scientific Interest.
- The whole Haven is included in a European Marine Special Area Of Conservation - the highest designation within Europe.
- The Haven is a wetland of international importance and is home to one of the most diverse estuarine communities in the United Kingdom.



In spring and summer the peaceful embayments and rivers provide breeding habitats and creche sites for various birds. Wildfowl and wader counts have observed significant numbers of shelduck, teal, widgeon, curlew and redshank with numbers of birds reaching 25,000 in the winter.

A code of conduct exists to help reduce disturbance to all wildlife from Waterbased activities throughout the waterway and coastal areas. For further information on the Pembrokeshire Marine Code visit www.pembrokeshiremarinecode.org.uk

SAC

Milford Haven waterway forms part of the 138,069.45ha Pembrokeshire Marine Special Area of Conservation. Human activities may damage or disturb the wildlife and habitats. Their protection depends on the behaviour of all users of the SAC. Please think and act in an environmentally friendly way and follow zoning, byelaws and the Pembrokeshire Marine Code. For further information about SAC, visit www.pembrokeshiremarinesac.org.uk

Recreation Activities

A whole range of water-based recreation activities take place on the Waterway, including sailing, power boating, water-skiing, personal watercraft use (jet-skiing), windsurfing, canoeing, fishing, diving and bathing. Activities take place both on an informal basis and through organised events; authorised rescue craft for organised events fly an orange flag with the word 'RESCUE' in white lettering.

Sharing the Estuary Safely

Within the National Park there is a presumption against activities which detract from quiet enjoyment. The Milford Haven Port Authority is responsible for regulating navigation throughout the Waterway and has promoted bye-laws for this purpose (see reverse panel). Zoning parts of the Waterway for various high speed activities has helped to ensure that the sensitive areas of the Haven remain tranquil. Importantly, this also helps reduce conflict between users and ensures safety of navigation for all.

It is recommended that you:

- have on board and switched on a marine VHF radio capable of listening to the harbour working channel 12 and channel 16.
- check the weather forecast to ensure that your vessel is capable of handling the anticipated conditions.
- check the prevailing sea conditions before proceeding to the harbour entrance.
- ensure that your vessel is handled in a competent manner and avoid taking any unnecessary risks.

Information



The Water Ranger patrols the Waterway all the way from St. Ann's Head at the entrance to the Haven, upriver to Haverfordwest on the Western Cleddau, and Blackpool Mill on the Eastern Cleddau. The main aim of the service on the water is to provide information, advice and assistance to all waterway users, police the zoning system and enforce the appropriate bye-laws. Liaison and education work is also carried out to promote understanding and appreciation of the area. If you wish to contact the Water Ranger please call 01646 696100.

appropriate bye-laws. Liaison and education work is also carried out to promote understanding and appreciation of the area. If you wish to contact the Water Ranger please call 01646 696100.

A whole range of further information for recreation users, including tidal, access and weather details, can be found by visiting the leisure section of our website www.mhpa.co.uk

Key

- These areas are used by sailing schools for teaching beginners. Proceed with caution
- Dead Slow Minimum Wake
- Jet Ski/PWC Aquabatics Area
- Water-skiing Areas
- National Park
- Marker Buoys
- Castle
- Yacht Club
- Hotel or Public House
- Launch Site
- Pontoon (Seasonal)
- Moorings (Commercial)

- Leading Lights in the Haven

Haven Approach:

West Blockhouse (WBH)
Watwick Beacon (WB) 022(T)

West Channel:

Great Castle Head (GCH)
Little Castle Head (LCH) 040(T)

Main Channel:

Popton and Bullwell beacons
(PP) (BW) in line 095(T) 094(T)

Milford Shelf:

Beacons above Newton Noyes
(NN) 080(T) 087(T)

Haverfordwest
High Water Only



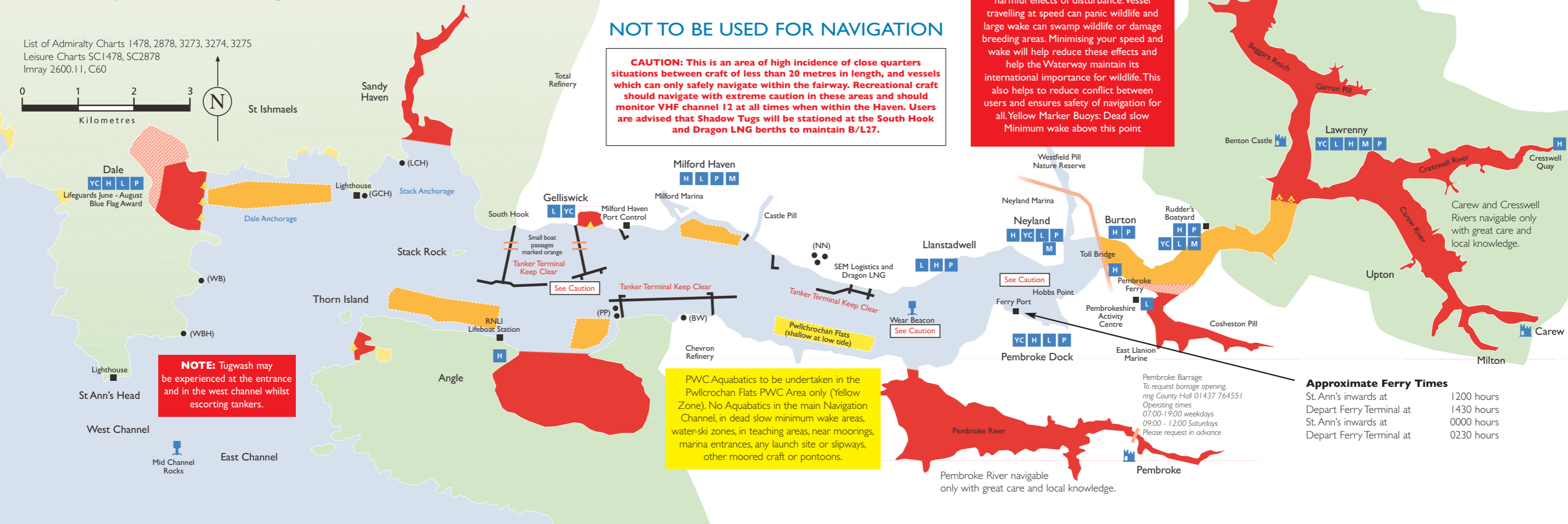
In the interest of Safety for all Waterway users, to maintain balance and reduce conflict, it is clear that various practices of years gone by may be no longer appropriate. With the inevitable increase in water-borne activity, greater numbers of ever more powerful craft and the designation of the Haven as a Special Area of Conservation, it is imperative that everyone involved co-operates with both current and future Recreation Management Policy.

Dead Slow Minimum Wake areas:
The restrictions on speed and wake in various places on the Haven helps protect the wildlife and environment from the harmful effects of disturbance. Vessel travelling at speed can panic wildlife and large wake can swamp wildlife or damage breeding areas. Minimising your speed and wake will help reduce these effects and help the Waterway maintain its international importance for wildlife. This also helps to reduce conflict between users and ensures safety of navigation for all. Yellow Marker Buoys: Dead slow Minimum wake above this point

NOT TO BE USED FOR NAVIGATION

CAUTION: This is an area of high incidence of close quarters situations between craft of less than 20 metres in length, and vessels which can only safely navigate within the fairway. Recreational craft should navigate with extreme caution in these areas and should monitor VHF channel 12 at all times when within the Haven. Users are advised that Shadow Tugs will be stationed at the South Hook and Dragon LNG berths to maintain B/L27.

List of Admiralty Charts 1478, 2878, 3273, 3274, 3275
Leisure Charts SC1478, SC2878
Imray 2600.11, C60



NOTE: Tugwash may be experienced at the entrance and in the west channel whilst escorting tankers.

PWC Aquabatics to be undertaken in the Pwllcrochan Flats PWC Area only (Yellow Zone). No Aquabatics in the main Navigation Channel, in dead slow minimum wake areas, water-ski zones, in teaching areas, near moorings, marina entrances, any launch site or slipways, other moored craft or pontoons.

Pembroke Barrage
To request barrage opening, ring County Hall 01437 764551
Operating times
07:00-19:00 weekdays
09:00 - 12:00 Saturdays
Please request in advance

Approximate Ferry Times

St. Ann's inwards at	1200 hours
Depart Ferry Terminal at	1430 hours
St. Ann's inwards at	0000 hours
Depart Ferry Terminal at	0230 hours

Pembroke River navigable only with great care and local knowledge.

Welcome

It is my pleasure to welcome you to the Milford Haven Waterway.

Having undergone several new developments in recent years, the commercial shipping levels at the port reached record-breaking figures during 2009 and whilst we are proud of our reputation as the UK's Energy Capital, we are always keen to demonstrate how an increasing number of leisure users happily co-exist with the commercial traffic on the Haven. Indeed, the majority of the 23 miles for which we are responsible, is devoted entirely to recreational use.

Being fully prepared is vitally important. This guide will give you a valuable insight into the sheltered, tidal Waterway - the designated leisure and commercial zones, water patrols, water safety, weather, tidal streams, as well as the many special wildlife colonies that line its shores.

We are delighted for you to experience the many recreational opportunities afforded on the Waterway and in working hard to ensure the safe enjoyment of leisure users, ask that you continue to respect the specified usage and zoning areas.

Wishing you continued enjoyment on the water,



MC Andrews, Harbourmaster

Milford Haven Port Authority - Selected Bye-laws

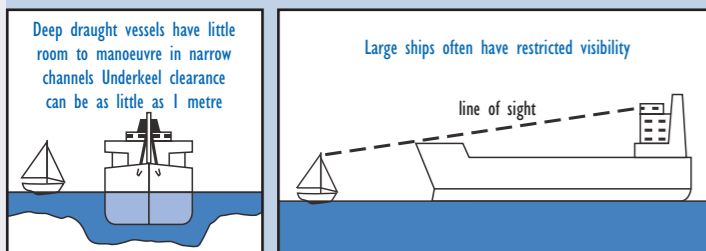
B/L20 Vessels to be Navigated with Care:

A vessel shall not be navigated or manoeuvred within the Haven in such a manner or at such speed as will or may:

- Cause damage to any lock gate, sea wall, jetty or other property within the Haven;
- Cause damage, inconvenience or interruption to dredgers or other craft working within the Haven;
- Cause damage, danger or inconvenience to other users of the Haven.

B/L22 As to Fairway:

No vessel (whether sailing or power-driven) which is not confined to a channel by a reason of its draught, shall make use of that channel in such a way as to cause obstruction to any other vessel (whether sailing or power driven) which is confined to that channel by reason of its draught.



B/L24 Recognised Landing Place not to be Obstructed:

A master shall not place his vessel or allow it to be in such a situation as to obstruct or interfere with the access to any recognised landing place in the Haven.

B/L27 Unauthorised Vessels not to Approach Petroleum Berth:

Except with the permission of the Harbourmaster no vessel other than a petroleum ship, a vessel engaged in the mooring, unmooring and berthing operations of a petroleum ship or a vessel engaged in supplying or

servicing a petroleum ship shall enter or navigate within 100 metres of a petroleum berth or a petroleum ship moored thereto.

B/L29 Water-skiing and Aqua-planing

A person shall not without the permission of the Harbourmaster engage or take part in water-skiing or aqua-planing, para-kiting or any similar airborne or waterborne activities in the Haven except in such areas as the Harbourmaster may designate and in accordance with such reasonable conditions as he may impose.

Note: The above are not permitted amongst moorings.

B/L30 Navigating Whilst Drunk

A person shall not navigate any vessel within the Haven whilst under the influence of drink or drugs to such an extent as to be incapable of taking proper control of the vessel.

B/L56 Acts Affecting Safety of Navigation

A person shall not do any act or thing injuriously affecting the safety of navigation within the Haven.

Full details of the Milford Haven Bye-laws 1984 are available on request from the Harbourmaster.

Selected International Regulations for Preventing Collision at Sea 1972 (with 1995 amendments)

Rule 5 Every vessel shall at all times maintain proper lookout by sight and hearing as well as by all available means appropriate to the prevailing circumstances and conditions so as to make a full appraisal of the situation and or risk of collision.

Rule 6 Every vessel shall at all times proceed at a safe speed so that she can take proper and effective action to avoid a collision and be stopped within a distance appropriate to the prevailing conditions.

Rule 9(b) A vessel of less than 20m in length or a sailing vessel shall not impede the passage of a vessel which can safely navigate only within a narrow channel or fairway.

Rule 13 Any vessel overtaking any other shall keep out of the way of the vessel being overtaken.

Rule 14(a) When two power-driven vessels are meeting on reciprocal courses so as to involve risk of collision each shall alter her course to starboard so that each shall pass on the port side of each other.

Rule 18(a) A power-driven vessel underway shall keep out of the way of:

iv) a sailing vessel

Rule 18(a)(b) A vessel underway shall keep out of the way of:

- a vessel not under command;
- a vessel restricted in her ability to manoeuvre;
- a vessel engaged in fishing;

Navigation Notes

Approach for Milford Docks

Leading lights 348° fixed blue in line with fixed blue on white background attached to wall below the Lord Nelson Hotel.

Cleddau Bridge

There may be confused water by bridge piers approximately 1 hour before and after High Water Springs.

FOG recommended procedure for small craft in visibility of 0.5 mile or less

1. All craft with VHF radio maintain a listening watch on channel 12.
2. Provided you are aware of your position and you intend staying out of the fairway, just monitor the commercial activity in the Haven as reported on channel 12.
3. If you are uncertain of your position, it may be prudent to anchor clear of the shipping channel until visibility improves.

Sound signals used by vessels in the area (Bye-law No 9)

Signal

Four short blasts in rapid succession

Meaning

A power-driven vessel underway is about to turn around (altering course more than 135°)

followed after a short interval by

One short blast

vessel turning with head to starboard

or

Two short blasts

vessel turning with head to port

Three short blasts

vessel operating to stern

One long blast, two short blasts

power-driven vessel or vessel not under command unable to give way to a sailing vessel

Five short blasts

a vessel is doubtful if you are taking sufficient avoiding action

Tidal Differences at High Water

Appropriate times to be applied to Milford Haven High Water Predictions

Dover	+5 hrs
Fishguard	+1 hr 3 mins
Neyland	+2 mins
Haverfordwest	+10 mins
Tenby	-14 mins
Swansea	+5 mins
Ilfracombe	-30 mins
Padstow	-50 mins

Tidal Streams

Across the entrance to Milford Haven the streams run approximately at right angles to the line of approach; well within the entrance they run nearly parallel to the channel.

The tidal streams run approximately as follows:

Position	Interval from High Water Milford Haven	Direction
1 mile outside entrance	+0455	East
	-0125	West
<i>Maximum spring rate in each direction is 2.25 knots</i>		
Inside the entrance	-0555	Ingoing
	+0030	Outgoing
<i>Maximum spring ingoing rate is 1.5 knots and outgoing rate is 1.75 knots</i>		

It should be noted that heavy swell may be experienced until inside St Anne's Head in adverse conditions as far as Angle Light-buoy.

Tidal streams within the Haven run in the direction of the deepwater channel as far as Wear Point (51°42'N, 04°59'W). In the reach above the Wear Point the ingoing stream is deflected to the north side of the channel by Carr Spit (51°42'N, 04°57.8'W).

In Pembroke Reach the ingoing stream runs principally in the channel north of Dockyard Bank, attaining a Spring rate of 2.0 knots; it is weak and irregular in the channel south of this bank, in which it attains a spring rate of 0.5 knot. The outgoing stream runs strongly in the channel south of Dockyard Bank, attaining a spring rate of 2.0 knots. It is weak on the south side of the channel, north of the bank; in the north part of the latter channel an eddy runs strongly during the outgoing stream.

Local Weather Information

Port Control VHF channels 12, 14

Times: at, or soon after; 0300, 0900, 1500 and 2100 hours GMT daily; prior to these broadcasts, notification will be transmitted to all ships on channel 16. Gale warnings will be broadcast on receipt. Forecasts will be relayed on request at times other than the routine schedule.

Milford Coastguard VHF channels 16, 84

Times: Inshore weather 0750, repeated three hourly, and 1950, repeated three hourly. Strong wind and gale warnings are broadcast as soon as they have been received and on subsequent three hour forecasts.

Waterway Patrol Vessels

The Harbourmaster operates dedicated patrol craft throughout the Waterway under his control. 24 hour cover is maintained by patrol cutters which are recognised by their green hulls and white superstructure. During the summer season, and at busy times, they are augmented by smaller patrol craft particularly in the reaches above the Cleddau Bridge. The small craft are marked 'Patrol'. The patrol craft are on duty to assist all Waterway users, leisure or commercial, with assistance, advice and water safety. All patrol vessels keep radio watch on channel 12.

On the water safety

Mariners', in particular recreational users, attention is drawn to a recent study conducted by the Maritime & Coastguard Agency in association with the RNLI and RYA in which it was found that out of 49 recent drownings, 29 could have been avoided if the person had been wearing a lifejacket.

It is strongly recommended that, correctly worn, properly maintained, fit for purpose lifejackets be used at all times when on the waters of the Haven and whilst at sea.

RNLI guidelines on all aspects of safety are available free of charge by calling 0800 326 0600, or visiting www.rnli.org.uk

A Tamar class lifeboat and an inflatable 'D' class inshore lifeboat are based at Angle. People in danger and needing rescue services should contact Milford Coastguard - 999 - ask for Coastguard, or call on VHF channel 16 using accepted emergency procedures.

Fishing Restrictions

South Wales Sea Fisheries Committee Byelaws and the Bass Order 1990 restrict fishing from 30th April to 1st November in Pwllchrchan flats and the Pembroke River and the waters above the Cleddau bridge. For details call 01792 654466 or 01646 693412.